

品质改变世界
QUALITY CHANGES THE WORLD

SANY®



三一沥青搅拌站及热再生设备
SANY ASPHALT MIXING PLANT AND
HOT RECYCLING EQUIPMENT



中国湖南长沙经济技术开发区三一工业城
Address: SANY Industry Town, Changsha National Economic & Technical Development
Zone, Hunan, China
邮编 Zip 410100
电话 Tel 0731-84031888 售后服务热线 After-sales service 4008 87 8318
传真 Fax 0731-84031999 咨询投诉电话 Consulting and complaint telephone 4008 87 9318

代理商信息
Agent Informatio

如产品配置（含技术参数）发生变动，恕不另行通知，以交机实物为准。
版权为三一重工所有，未经三一重工书面许可，本目录任何部分的内容不得被复制或抄袭用于任何目的。
三一重工市场部制作 2021 年 5 月
As technology is being updated unceasingly, technical parameters are subject to change without
prior notice. The machine in the picture may include auxiliary equipment. Copyright belongs to Sany
Heavy Industry, no part of this catalogue can be reproduced or copied for any purpose without written
permission of Sany Heavy Industry.
Produced by Sany Marketing Department May 2021.

www.sany.com.cn

SANY®



扫码得电子版



三一云二维码

www.sany.com.cn

Contents

全球最大的沥青搅拌站生产基地

The World's Largest Asphalt Batching Plant Manufacturing Base

P01	三一路面机械 Sany Road Machinery
P09	沥青搅拌站 Asphalt Batching Plant <ul style="list-style-type: none">产品型谱 Product Portfolio技术参数 Technical Parameters环保方案 Eco-friendly Options热再生设备主要参数与技术条件 Main Parameters and Technical Specifications of Hot Recycling Equipment
P21	领先技术 Industry-Leading Technology
P27	精益制造 Lean Manufacturing
P28	品质保证 Quality Guarantee
P29	应用案例 Cases
P31	服务承诺 Service Commitment



三一路面机械

三一重工股份有限公司创建于 1994 年。自成立以来，公司以年均 50% 以上速度增长。目前已经发展为中国最大、全球前三的工程机械制造商，也是全球最大的混凝土机械制造商、国内最大最先进的成套道路施工设备供应商之一。

三一路面机械立足高端，是国内最大、最先进的成套道路施工设备供应商之一，主导产品涵盖摊铺机、压路机、平地机、铣刨机、沥青搅拌站五大系列产品，市场销售遍布欧美、非洲、东南亚、澳大利亚、俄罗斯等多个国家和地区。其中，全液压压路机、沥青站、摊铺机市场占有率居国内首位，摊铺机连续多年蝉联国内销量冠军。

近年来，三一路机更是开启数字化征程，成功研发全球首套无人驾驶摊铺压实机群，领先全球路机无人智能的发展，多次创下全球记录：全球“规模最大”的路机无人机群、全球首次“已营运”高速公路无人智能化机群施工、全球首次水稳面层无人智能化机群施工 ... 三一无人驾驶机群正应用于不同工况的各大工程，并将引领中国公路建设快速迈向数字化施工新时代！

SANY ROAD MACHINERY

SANY Industries Co., Ltd. was founded in 1994. When the company was established, it can be seen that the company has grown at an average annual rate of over 50%. Currently, China's largest and the world's top three construction machinery manufacturers are the world's largest concrete machinery manufacturers, which includes one of the largest and most advanced suppliers of complete sets of road construction equipment in China.

SANY Machinery has many features, which include being based on the high-end and being one of the largest and most advanced suppliers of complete sets of road construction equipment in China. Its leading products cover five series of products: pavers, rollers, graders, milling machines and asphalt mixing plants. In the market, sales are spread over many countries and regions such as Europe, America, Africa, Southeast Asia, Australia and Russia. The market share of hydraulic rollers, asphalt plants and pavers ranks first in China. Among them, pavers have been the domestic sales champion for many years in a row.

In recent years, SANY Machine is to open the digital journey, the world's first unmanned paving and compaction machine group was developed, the global road machine unmanned intelligent development, repeatedly set a global record can be led: the world's "largest" road machine unmanned fleet, the world's first "has operated The world's first "operational" unmanned intelligent fleet of highway machines. In the world, it is the first water-stable surface layer unmanned intelligent aircraft group construction... For SANY driverless fleet, which is being applied to major projects in different working conditions, is being led in the process of China's highway construction rapidly moving towards a new era of digital construction!

EFFICIENTSANY ASPHALT BATCHING PLANT 高效沥青搅拌站

精准

- ◆ 沥青秤为自流式结构，采用二次计量技术，落差自动修正，沥青计量精度：动态 $\pm 1.0\%$
- ◆ 粉料计量精度：动态 $\pm 1.0\%$
- ◆ 骨料计量采用脉冲振动技术，落差自动修正，计量精度：动态 $\pm 1.5\%$
- ◆ 油石比精度 $\leq \pm 0.1\%$

环保

- ◆ 尾气排放浓度 $\leq 20\text{mg}/\text{Nm}^3$ ，林格曼黑度 $\leq \text{I}$ 级，环境噪音：85dB(控制室内操作人员耳边噪声 70dB)
- ◆ 沥青站主体为标配沥青站 + 选配环保设施
- ◆ 可配套三一 LNG 气化站，提供燃料，降低排放
- ◆ 无尘主楼

可靠

- ◆ 在关键部件的检修门上装有机械式安全装置，强制保护维修人员生命安全
- ◆ 控制系统双主机冗余设计，操作性能更可靠

节能

- ◆ 总装机功率小
- ◆ 烘干滚筒热交换率： $\geq 85\%$
- ◆ 燃烧器变频控制技术，每吨成品料节油 10%
- ◆ 沥青快速加热技术，使加热准备时间缩短近 1h

高效

- ◆ 15% 的产能冗余设计
- ◆ 特殊设计的搅拌主机，搅拌效率提高 10%
- ◆ 筛分效率 $\geq 90\%$

智能

- ◆ 网络数据共享，GPS 远程故障诊断系
- ◆ 全过程料温控制

PRECISE MEASUREMENT

- ◆ The asphalt balance has a gravity-flowing structure and adopts + secondary measurement technology, with automatic drop correction; asphalt measurement accuracy: dynamic $\pm 1.0\%$;
- ◆ Powder measurement accuracy: dynamic $\pm 1.0\%$;
- ◆ The pulse vibration technology adopted, with automatic drop correction; measurement accuracy: dynamic $\pm 1.5\%$;
- ◆ Accuracy of bitumen aggregate ratio $\leq \pm 0.1\%$

ENERGY EFFICIENT

- ◆ Small total installed power;
- ◆ Heat exchange rate of drying drum: $\geq 85\%$
- ◆ With the frequency conversion control technologies adopted for the burner, 10% of bitumen is saved per mixed material;
- ◆ With the rapid asphalt-heating technology adopted, the heating preparation time is shortened by about 1 h.

ECO-FRIENDLY

- ◆ Exhaust emission concentration $\leq 20\text{ mg}/\text{Nm}^3$, Ringelmann blackness $\leq \text{Grade 1}$, ambient noise $\leq 80\text{ dB}$ (70dB noise at ear in the control room)
- ◆ The optional eco-friendly design is adopted for the main body of the batching plant proper, with zero dust emission;
- ◆ SANY LNG gasification station for providing fuel and reducing exhaust emission is optional

RELIABLE

- ◆ The safety device is installed in the access door of every key part for mandatorily protecting the life security of maintenance personnel.
- ◆ The dual-computer redundancy design is adopted for the control system, providing a more reliable operating performance

EXCEPTIONAL EFFICIENCY

- ◆ % capacity redundancy design;
- ◆ Specially designed mixing body whose mixing efficiency is increased by 15%
- ◆ Screening efficiency $\geq 90\%$

CONVENIENT MANAGEMENT

- ◆ SANY asphalt batching plant expert management system
- ◆ Network data sharing and GPS remote fault diagnosis system

ASPHALT MIXING PLANT PRODUCT SPECTRUM

沥青搅拌站 产品型谱

Product Portfolio Of Asphalt Batching Plant 沥青搅拌站型谱

名称 Name	型号 Model
2000 型沥青搅拌站 Asphalt Batching Plant	SLB2000C8、SLB2000BC8
3000 型沥青搅拌站 Asphalt Batching Plant	SLB3000C8、SLB3000DC8
4000 型沥青搅拌站 Asphalt Batching Plant	SLB4000C8、SLB4000DC8
5000 型沥青搅拌站 Asphalt Batching Plant	SLB5000C8
原再生一体式沥青搅拌站 Asphalt Batching Plant	SLZ3000、SLZ4000

注：系列沥青站中，环保设施分三类地区选配。
Environmental protection configurations shall be designed according to three types of areas:

Product Portfolio Of Asphalt Batching Plant 热再生设备型谱

名称 Name	型号 Model
热再生设备 Hot Recycling Equipment	SHR120C8、SHR160C8



● 沥青搅拌站实景图
Picture of asphalt batching plant

TECHNICAL PARAMETER

技术参数



技术特点：

- 除尘烘干热效率高；
- 模块化设计，多种布局可选择，适合狭窄、复杂、不规则场地安装，占地面积相比传统结构减小 33%；
- 自主开发的双变频燃烧器,燃烧效率更高、油品适应性更强
- 挡风抑尘、微雾降尘、等离子净化及过程封闭等多项环保技术，有效解决扬尘、烟气和噪音污染（选配）；
- 首创沥青“快热”技术，实现沥青“保鲜”，节省燃料，缩短生产准备时间，只需提前 30min 启动导热油炉，即可投入生产（选配）；

Technical characteristics:

- Dedusting -drying and high thermal efficiency;
- Modular design, multiple optional layouts, suitable for installation at narrow, complicated and irregular sites, and reduction of occupied area by 33% compared to the traditional structure;
- Independently developed dual frequency converting burner, with a higher burning efficiency and better fuel adaptability;
- Several environmental technologies concerning wind and dust control, dust suppression through the fog system, plasma cleaning and process enclosure that control effectively the dust, smoke and noise pollution (optional);
- Initiative asphalt “fast heating” technology which enables the asphalt “freshness preservation”, saves fuel and shortens the production preparation time and ensures that asphalt can be put in production when the heat-conducting oil furnace is activated only 30 min beforehand (optional);

TECHNICAL PARAMETER OF C8

C8 沥青站标准配置及主要参数

型号	SLB2000C8	SLB3000C8	SLB4000C8	SLB5000C8	SLZ3000	SLZ4000
生产能力 ※ Rated productivity※	150–180t/h	240–280t/h	320–360t/h	400–450t/h	240–280t/h	320–360t/h
冷料仓 Cold aggregate silo	4 × 10m³	5 × 13m³	6 × 13m³	6 × 18m³	6 × 13m³	6 × 13m³
上料宽度 Feeding width	3.6m					
烘干滚筒 Drying drum	φ 2m × 9m	φ 2.5m × 10m	φ 2.7m × 12m	φ 3m × 12m	φ 2.5m × 10m	φ 2.7m × 12m
烘干滚筒驱动功率 Drying drum driving power	4 × 11kW	4 × 22kW	4 × 30kW	4 × 37kW	4 × 22kW	4 × 30kW
轻重油两用燃烧器 Light/heavy oil burner	14MW	28MW	35MW	42MW	28MW	35MW
引风机 Induced draft fan	110kW	160kW	185kW	220kW	185kW	220kW
除尘过滤面积 Dedusting and filtering area	580m²	900m²	1200m²	1600m²	1200m²	1600m²
热骨料提升机 Hot aggregate hoist	18.5kW	30kW	45kW	75kW	30kW	45kW
振动筛 Vibrating screen	5 层筛	5 层筛	6 层筛	6 层筛	6 层筛	6 层筛
热骨料仓 Hot aggregate silo	25m³	55m³	65m³	85m³	65m³	65m³
额定搅拌能力 Rated mixing capacity	2250kg/ 批次 batch	3500kg/ 批次 batch	4500kg/ 批次 batch	6000kg/ 批次 batch	4500kg/ 批次 batch	6000kg/ 批次 batch
搅拌主机功率 Mixing body power	2 × 30kW	2 × 45kW	2 × 55kW	2 × 75kW	2 × 55kW	2 × 75kW
成品料仓容积 Mixed material silo volume	无仓式（标配） 50t/ 底置式（选配）	100t/ 底置式 bottom type	100t/ 底置式 bottom type	120t/ 底置式 bottom type	100t/ 底置式 bottom type	100t/ 底置式 bottom type
新粉罐 New powder tank	50m³	50m³	50m³	80m³	50m³	50m³
回收粉罐 Recycled powder tank	20m³	50m³	50m³	80m³	70m³	70m³
柴油罐 Diesel tank	12000L	12000L	30000L	30000L	12000L	30000L
沥青罐 Asphalt tank	2x50000L	3x50000L	4 × 50000L	5x50000L	3x50000L	4x50000L
重油罐 Heavy fuel tank	30000L	1x50000L	2 × 30000L	2 × 30000L	1 × 50000L	2 × 30000L
接卸槽 Receiving and discharging groove	1m³					
燃油导热油炉 Fuel-type eat-conducting oil furnace	60 × 104kcal/h	80 × 104kcal/h	80 × 104kcal/h	100 × 104kcal/h	80 × 104kcal/h	80 × 104kcal/h
总装机功率 Total installed power	380kW	603kW	730kW	990kW	900kW	1050kW

备注：
1、具体选装配置以合同约定为准，本配置表仅供参考，选配件不在标准配置中；
2、由于技术不断进步，上述技术参数可能会相应变化，三一对所有技术参数拥有最终解释权。
※ 标准工况：环境温度 20℃，标准大气压，冷骨料平均含水量 5%。热骨料温度 160℃，循环时间 45s，成品料为中粒式普通沥青混合料时的工况，符合《GB/T 17808-2010 沥青混合料搅拌设备》标准

Remarks:
1. Specific optional configuration shall be subject to the contract agreement. This table is for reference only. The optional parts are not included in standard configuration;
2. Due to continuous technological improvement, the above technical parameters may vary accordingly, and SANY reserves the right for final interpretation of all technical parameters.
※ Standard working condition: ambient temperature: 20℃ ; standard atmospheric pressure; average water content of cold aggregate: 5%; temperature of hot aggregate: 160℃ ; cycling time: 45 s; when the mixed material is common medium-sized particle asphalt, the working condition follows GB/T 17808-2010 Road construction and road maintenance machinery and equipment—Asphalt mixing plant



● SLZ4000 一体机效果图



选装方案及主要参数

型号 Model		SLB2000C8		SLB3000C8		SLB4000C8		SLB5000C8	
选配部件 Optional part									
冷料系统		4 × 13m³		5 × 15m³		6 × 15m³		8 × 18m³	
Cold aggregate system		地坑式	下沉 1.5m	地坑式	下沉 1.5m	地坑式	下沉 1.5m	地坑式	下沉 2m
		Pit type	subsidence	Pit type	subsidence	Pit type	subsidence	Pit type	subsidence
燃烧器	油气两用型	1200Kg/h		2350Kg/h		3180Kg/h		3500kg/h	
Burner	Oil-gas type	1420 Nm³/h		2780Nm³/h		3550Nm³/h		3930Nm³/h	
	燃 气 型 Gas type	1420 Nm³/h		2780Nm³/h		3550Nm³/h		3930Nm³/h	
外排粉加湿机 Discharged powder humidifier		加湿机							
油气两用型导热油炉 Coal-type heat-conducting oil furnace		60 × 104Kcal/h		80 × 104Kcal/h		80 × 104Kcal/h		100 × 104Kcal/h	
燃气型导热油炉 Gas-type heat-conducting oil furnace		60 × 104Kcal/h		80 × 104Kcal/h		80 × 104Kcal/h		100 × 104Kcal/h	
成品料仓 Mixed material silo	水平式 Horizontal	/		160t		200t		240t	
	无仓式 Side	0t (其中 SLB2000C8 标配, 其余型号选配)							
沥青罐	立式罐 Vertical	50000L							
		改性沥青罐卧式 2 个搅拌器							
		改性沥青罐立式 1 个搅拌器							

备注:
1、具体选装配置以合同约定为准, 本配置表仅供参考;
2、选装方案可单项可多项选装;
3、由于技术不断进步, 上述技术参数可能会相应变化, 三一对所有技术参数拥有最终解释权。

Remarks:
1. Specific optional configuration shall be subject to the contract agreement. This table is for reference only;
2. The optional scheme may include a single item or multiple items;
3. Due to continuous technological improvement, the above technical parameters may vary accordingly, and SANY reserves the right for final interpretation of all technical parameters.

OPTIONS FOR ECO-FRIENDLY ASPHALT MIXING PLANT

沥青搅拌站环保方案

污染源 source of pollution	环保措施 environmental protection measures
沥青烟气处理 Asphalt smoke treatment	接料通道沥青烟气直接燃烧 eceiving channel asphalt direct combustion
	沥青罐接卸槽沥青烟气处理 Asphalt tank Receiving and discharging groove Asphalt smoke treatment
	沥青罐烟气过滤系统 Asphalt tank Smoke filtering system
粉尘处理 dust removal treatment	冷料通风除尘系统 Cold aggregate ventilation dust removal system
	冷料仓、输送机防尘棚 hoper and conveyor dustproof tents
	主楼全包 Main tower external packaging
	接料通道封闭 Enclosed receiving channel
	回收粉加湿机 Recycle powder humidifier
	加湿机防尘棚 humidifier dustproof tents
	直排溢料防尘棚 Direct discharging flash dustproof tents
	接料通道喷雾抑尘 Fog-system-used dust suppression
	冷料仓喷雾抑尘 hoper spray dust suppression
	皮带机转接点喷雾 conveyor spray dust suppression
	溢料口喷雾 External flash spray dust suppression
	加湿机防尘棚喷雾 humidifier dustproof tents spray dust suppression
噪音处理 noise treatment	主烟囱消音器 Main chimney silencer
	引风机消音罩 the fan silencing cover
	烘干滚筒消音罩 Dry system silencing cover
	骨料提升机消音外包 Aggregate hoist silencing cover

备注：型号不同、配置不同则选装包功能略有差异。
Remarks: The functions of optional packages differ a little for different models and configurations.



● 上料系统：冷料防尘罩效果图
Effect Picture of Cold Aggregate Dust Shed and Cover for Feeding System



● 卸料系统：主楼接料通道封闭效果图
Effect Picture of Enclosed Main Tower Receiving Channel for Discharging System



● 环保沥青站效果
Effect Picture of Asphalt Batching Plant

最高环保措施 1 类环保可以达到标准：
1、粉尘 ≤ 20mg/m³ GB/T17808-2010《道路施工与养护机械设备沥青混合料搅拌设备》
2、沥青烟 ≤ 20mg/m³ GB16297-1996《大气污染物综合排放标准》

The highest environmental measures can be met:
1、Dust ≤ 20mg/m³ GB/T17808-2010《Road construction and maintenance machinery equipment asphalt mixture mixing equipment》
2、Asphalt smoke ≤ 20mg/m³ GB16297-1996《Comprehensive emission standards for atmospheric pollutants》

无尘主楼

- 物料通道全密闭设计
- “四重”负压吸尘
- 高效降尘，除尘效率 >99.9%

Dust-free main building

- Material channel in fully closed design
- “Quadruple” dust absorption with negative pressure
- Efficient dust falling; dedusting efficiency >99.9%

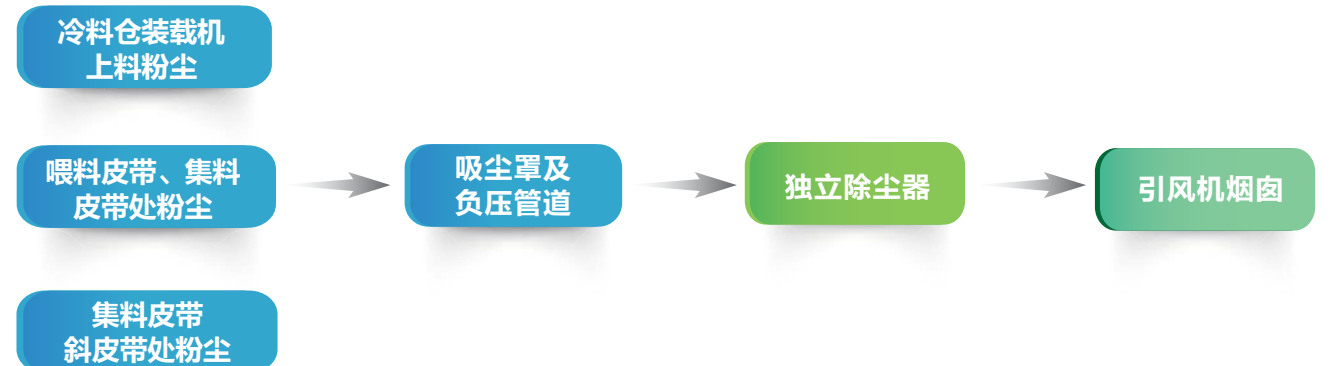
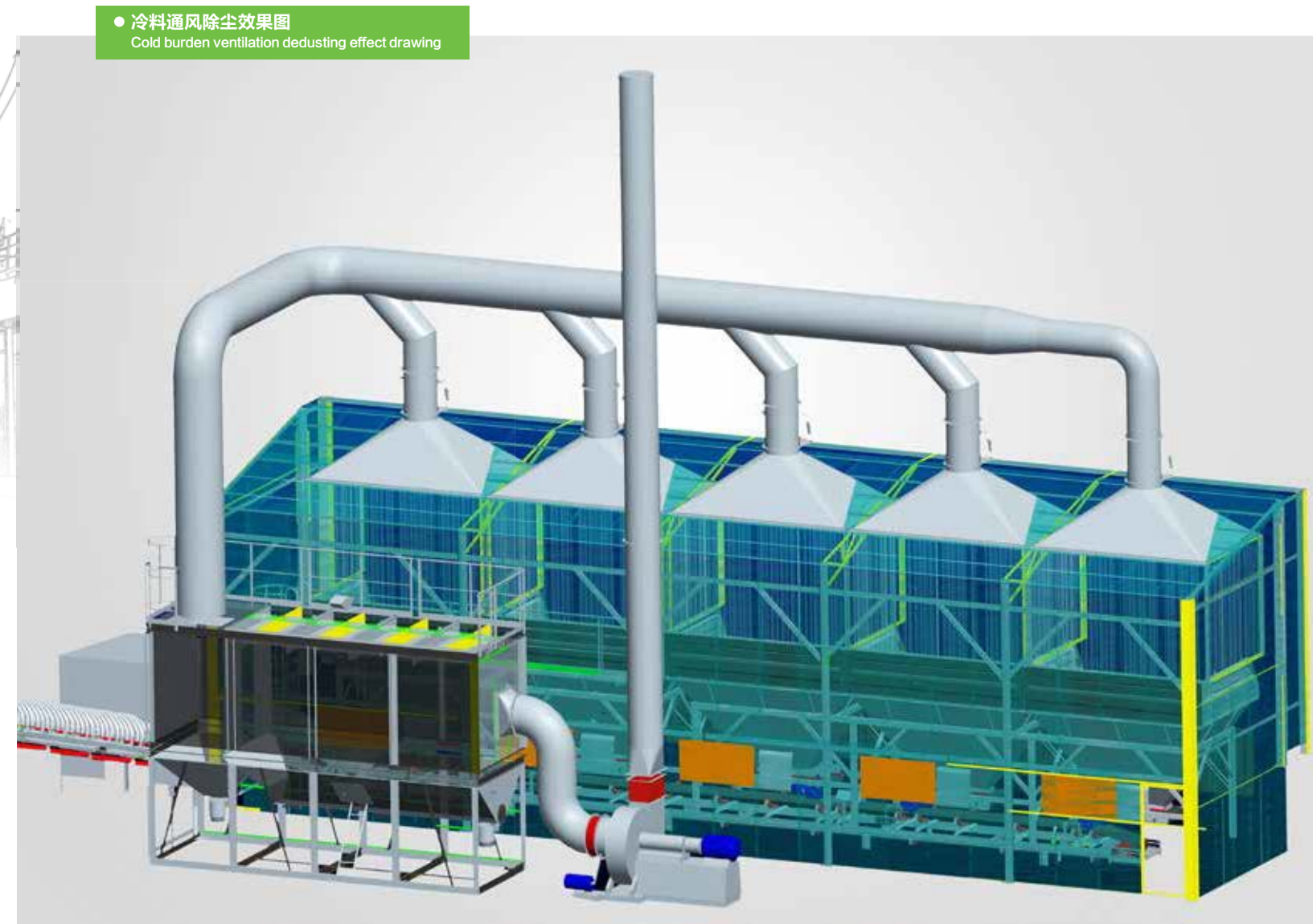
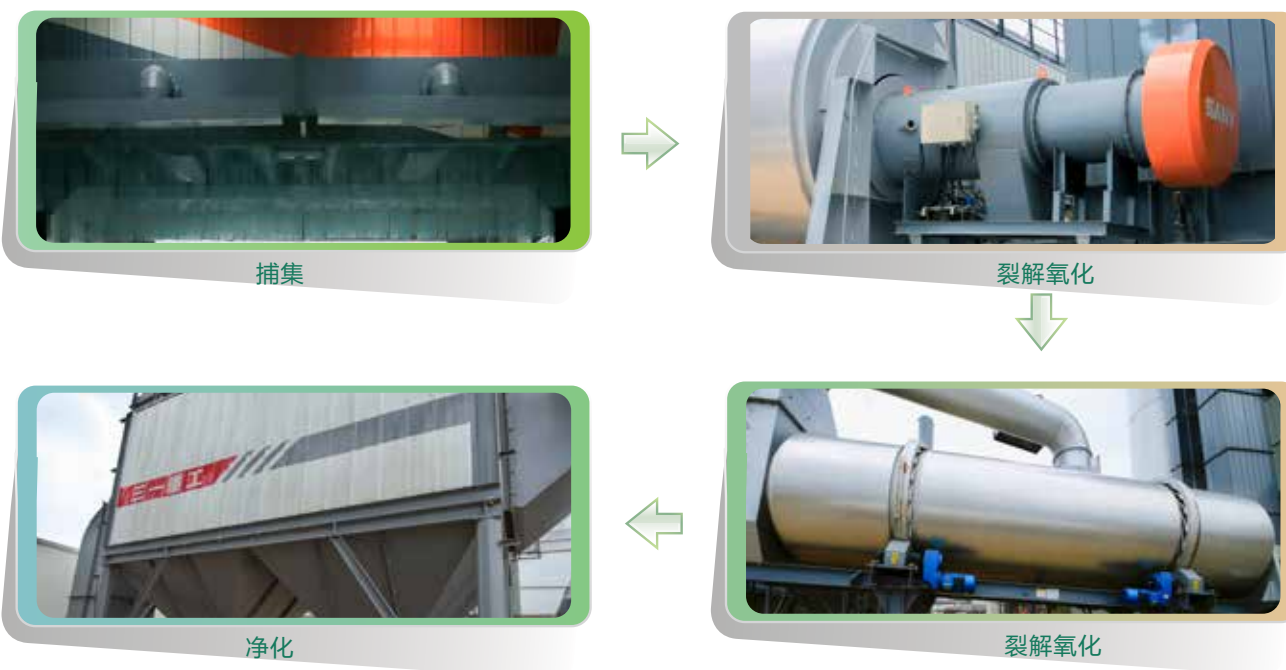


烟气直燃技术

- 烟气直燃燃烧器对烟气进行直接燃烧—烟气处理的最佳方式

Direct flue-gas combustion technique

- Direct combustion by direct flue-gas combustion burner—the best mode of flue-gas treatment



冷料通风除尘净化流程
Cold burden ventilation dedusting purification processing

HOT RECYCLING EQUIPMENT TECHNICAL PARAMETER

热再生设备主要参数与技术条件

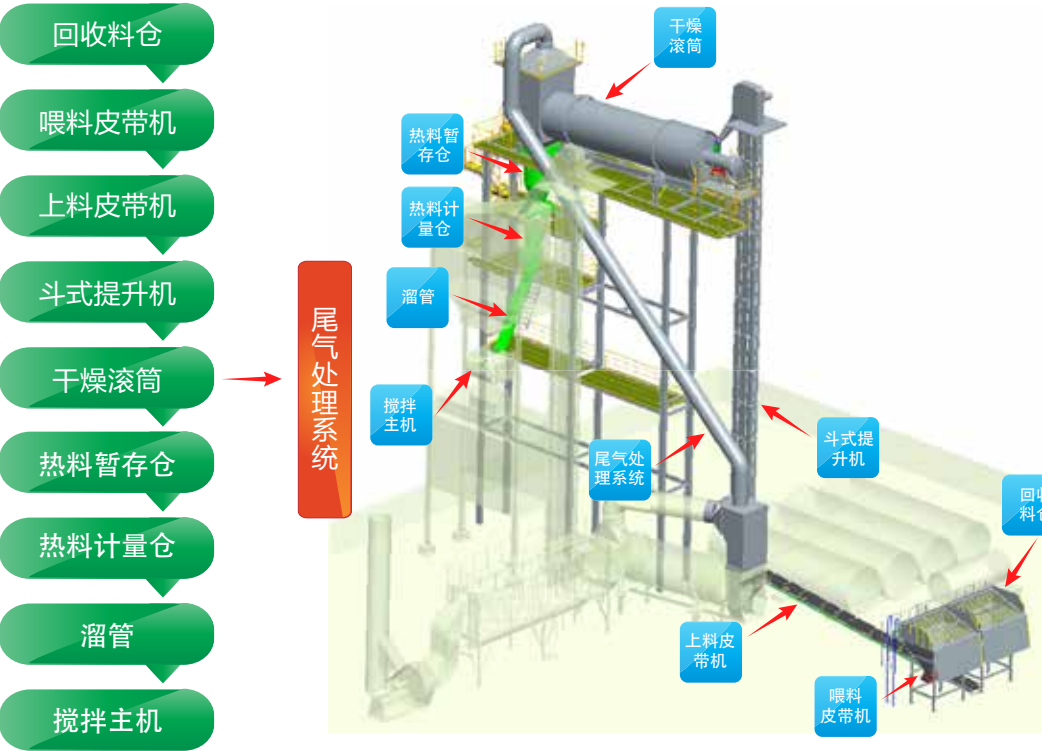
型 号	SHR120C8	SHR160C8
额定生产能力 Rated productivity	80~120t/h	140~160t/h
烘干滚筒 Drying drum	φ 2.5m × 12m	φ 2.5m × 15m
燃烧器功率 burner power	14MW	21MW
热料仓 hot bin	10t	10t
计量秤 Measuring scale	3t	3t
动态计量精度 Dynamic measurement accuracy	± 2%	± 2%
燃油消耗率 Fuel consumption	6.5kg/t	6.5kg/t
标准装机容量 Standard installed capacity	170kW	220kW
占地面积 Floor area	40m × 10m	43m × 10m

技术特点:

- 高效: 加强型的专用再生滚筒, 产能提高 10% 以上
- 节能: 总装机容量降低 20%, 节能 16%
- 省油: 超长滚筒, 热交换时间长, 热效率高, 省油 5%
- 环保: 整机全负压运行, 无粉尘外溢

Technical characteristics:

- High efficiency:Reinforced special hot recycling drying drum,increase production capacity by more than 10%
- Energy efficient: total installed capacity will be reduced by 20%, energy saving 16%
- Fuel efficient: Equipped with an extra-long drum providing, long heat exchange time and high thermal efficiency;
- Eco-friendly: full negative-pressure operation of the whole machine, without dust leakage



技术领先:

- 分布式控制技术, 适合热再生远距离的信号传输, 数字信号稳定, 抗干扰能力强;
- 独特的燃烧室专利技术, 再生料不会与火焰直接接触, 同时避免滚筒进料箱过热烧坏;
- 重油“双循环系统”技术, 实现楼顶燃烧器稳定、恒温供油;
- 全方位、独立导热油保温系统, 改善粘料

Leading technologies:

- Distributed control technology, suitable for remote hot recycling signal transmission, digital signal stabilization, Strong anti-interference ability
- Unique combustor patented technology, RAP don't direct contact with the flame, at the same time, avoid overheating of drum feed box
- Heavy oil dual cycle system technology, achieve the roof burner to stabilize constant temperature supply
- A fully independent thermal oil heating system, reduce material sticking;

INDUSTRY-LEADING TECHNOLOGY

领先技术

控制系统全面升级

- 网络数据支持、GPS 远程故障诊断监控、三一专家管理系统
- 双机冗余设计，双上位机互不干扰，相互独立，可靠性高
- 事件记录，促进产品不断提升、故障追溯还原
- 自保护系统，避免病毒侵入，提升系统稳定性
- 全过程料温动态控制

瀑布式料帘烘干滚筒

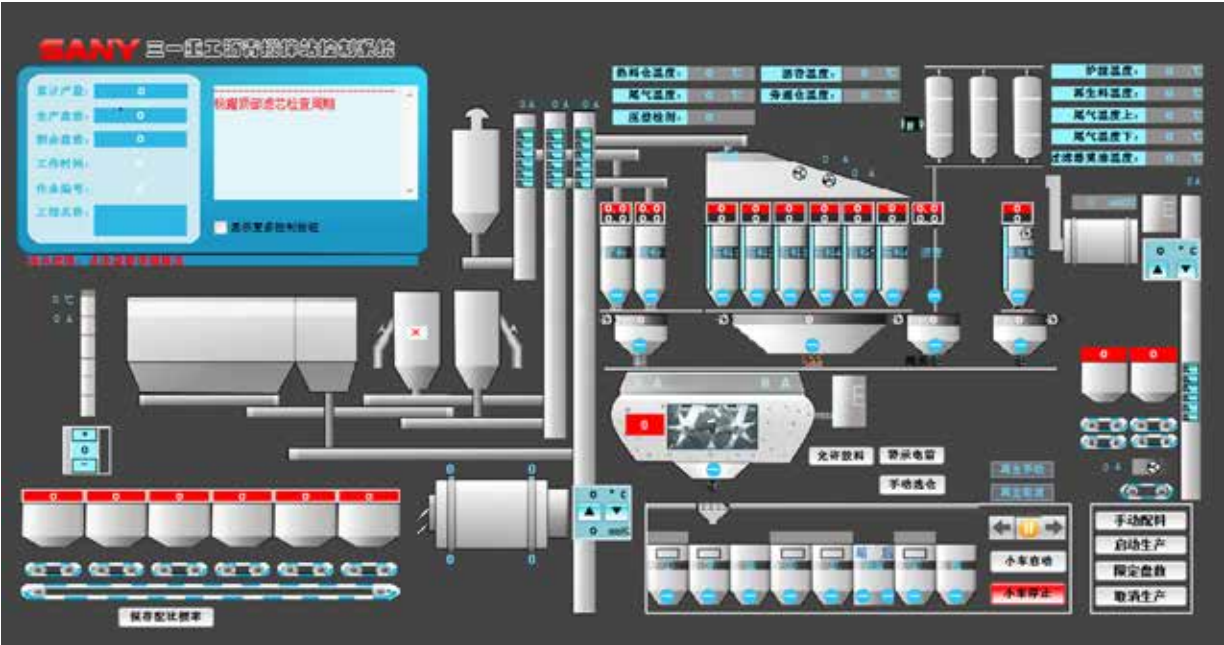
- 校企合作开发的节能型烘干筒：通过物料起始抛撒角、叶片持料量、料帘密度、物料滞留时间四个方面改善，热效率≥ 85%
- 高耐磨与高性能扬料叶片，延长筒体使用寿命

Overall-upgraded control system

- Network data supporting, GPS remote fault diagnosis and monitoring, SANY expert management system;
- Dual-computer redundancy design, with two reliable and independent upper computers not interfering with each other;
- Event recording which promotes the continuous product improvement and enables fault tracing and clearing;
- Self-protection system which prevents the virus invasion and enhances the system stability.
-

Drying and heating system

- Energy efficient drying drum developed through university-enterprise cooperation: thermal efficiency ≥ 85% by improving the initial material dispersing angle, material holdup of blades, material curtain density and material detention time;
- High abrasion-resistance and high-performance material-dispersing blades which prolong the service life of the drum



● 控制系统
Control system



● 烘干滚筒
Drying roller

专利技术

- 拥有多项国家级发明专利、实用新型专利与外观专利
- 独创的专利创新技术，有效提升了产品竞争实力

Patented technology

- Many national patents for invention, utility model and appearance;
- Ingenious patented innovative technologies which promote significantly the product competitiveness.



燃烧器

- 低压介质雾化，油品适应性好
- 油泵、风机双变频控制，提高系统的可靠性
- 油泵、风机采用变频控制，温度、配风和负压三种参数闭环控制，精确调节，节油 10%，
- 重油直接点火，无需柴油引火
- 特制风机，火焰形状稳定，延长火焰筒的使用寿命
- 油、气双在线检漏功能，确保安全可靠
- 自复位关闭阀门，防止安全事故发生
- 持续升级的故障诊断专家系统，可以指导、提醒用户进行相关故障排除

Type burner

- Low pressure medium atomization, good fuel adaptability;
- Fuel pump and blower with double frequency conversion control which improve the system reliability;
- Constant pressure control technology which realizes accurately-controlled fuel supply and a high-precision air-fuel ratio, reducing the mixed material per ton by 10%;
- Direct ignition with heavy oil instead of diesel;
- Special blower which ensures a stable flame profile and prolongs the service life of the flame tube;
- Online fuel-gas leakage detection function which ensures safety and reliability;
- Self-resetting valve-off which prevents safety accidents;
- Constantly upgraded fault diagnosis expert system which may instruct and remind the users to eliminate relevant faults.



- 燃烧器
- None

环保燃烧器

- 风量比例智能控制，燃烧效率更高。
- 沥青烟气直达火焰中心燃烧，出来效率更高。

高效振动筛

- 采用数字仿真、动态模拟技术、筛分效率 $\geq 95\%$ ，混仓率 $< 5\%$
- 独特密封结构、不渗水、无粉尘泄漏，外包岩棉保温，热量散失少，低噪音
- 振动电机免维护
- 插销式筛网固定方式、可快速轻松更换筛网

Efficient vibrating screen

- Application of digital simulation and dynamic simulation technologies realizing a screening efficiency $\geq 95\%$ and a material mixing rate $< 5\%$;
- Unique leakproof structure without water seepage or dust leakage and wrapped with rock wool for heat preservation, thus achieving little heat loss and low noises;
- Maintenance-free vibrating motor
- Plug-in screen mesh mounting method with which the screen mesh may be replaced easily.



● 振动筛
Vibrating screen



● 筛网
Screen mesh



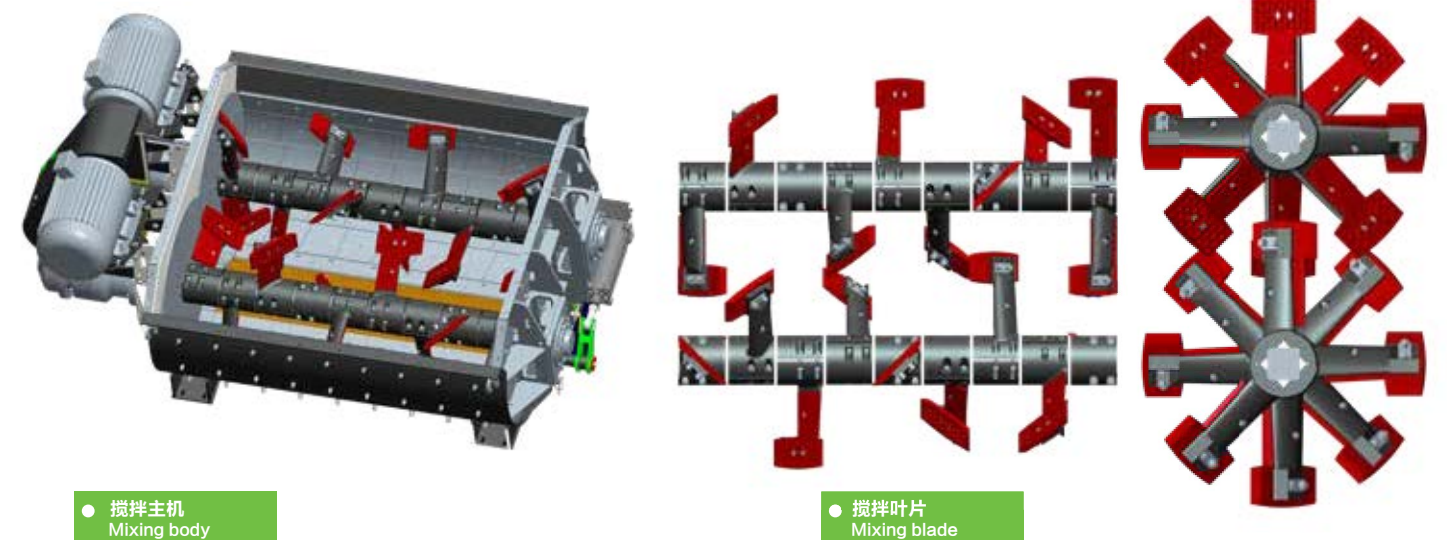
● 筛网更换窗口
Screen mesh replacing window

双循环沸腾式搅拌机

- 具备完整升级能力：沥青冷热再生接口、多种添加剂接口
- 特殊设计的搅拌主机叶片布置、独特的搅拌轴，参与搅拌的搅拌臂，使搅拌周期缩短 2-3S，材料裹敷均匀，搅拌效率提升 15%
- 安全装置，强制保护维修人员操作安全
- 高速端同步：运行平稳
- 偏心弧形门：零卡料，磨损小

Dual-cycle Boiling Type Mixer

- Capability of complete upgrading: Asphalt hot/cold regeneration interface and interfaces for multiple additives
- Specially-designed mixer blade, unique mixer shaft and mixing arm help reduce the mixing period by 2-3 s, contribute to even wrapping of materials and improve mixing efficiency by 15%
- Safety device is used to ensure the operation safety of maintenance staffs
- High-speed synchronization of terminal: Stable operation
- Eccentric arc door: No material blockage and small friction loss



● 搅拌主机
Mixing body

● 搅拌叶片
Mixing blade

除尘系统

- 优质布袋，过滤精度高，耐高温，耐腐蚀，寿命长
- 粉尘排放浓度小于 $20\text{mg}/\text{Nm}^3$
- 高温、低温双重报警，超高温自动断火功能

Dedusting system

- High-quality bags characterized by high filtering accuracy, high temperature resistance, corrosion resistance and long service life;
- Dust emission concentration less than $20\text{mg}/\text{Nm}^3$;
- High and low temperature warning, and automatic cutoff at superhigh temperature



● 除尘系统
Dedusting system

LEAN MANUFACTURING 精益制造

路机人挥洒汗水，精益求精
不断刷新中国制造的更高水平
更多的“第一”背后
是路机人改写中国制造至中国创造的实干之心

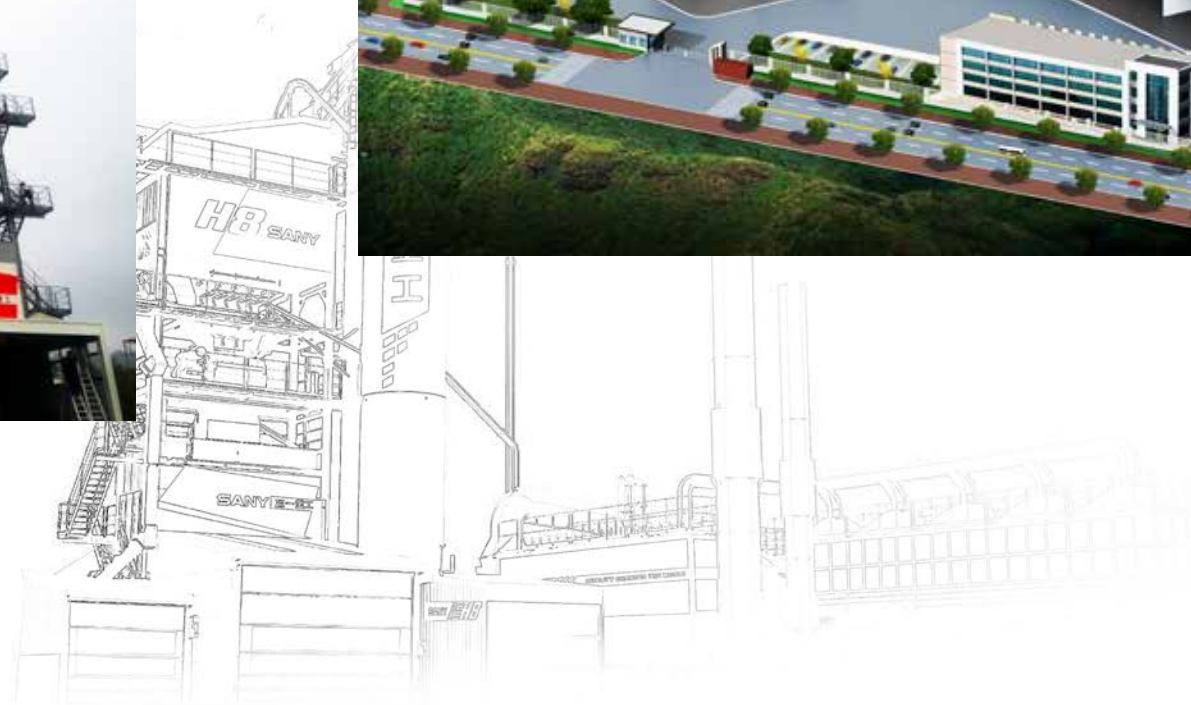
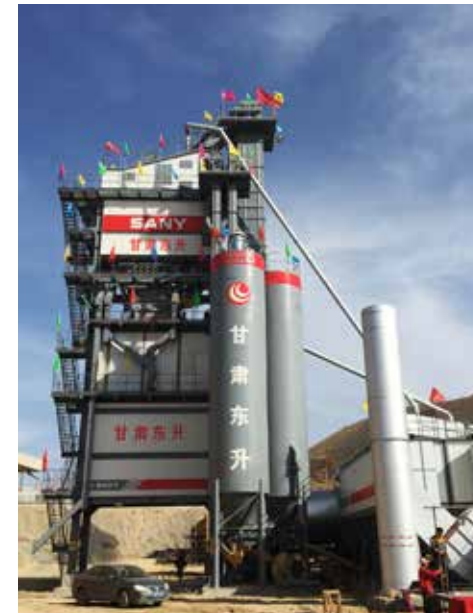
Personnel in the Company make every efforts to constantly strive for perfection and continuously achieve a higher Chinese manufacturing level;
Behind various reputable “No.1” achievements is their ambition to realize Chinese creation from Chinese manufacturing.



QUALITY ASSURANCE 品质保证



Cases 应用案例



三一路机 “123” 价值服务承诺

Road Machinery Product "123" Value Service Commitment



购买三一路机设备免费赠送人工服务费

- ◆ 路机产品按《操作保养手册》保养节点且使用三一纯正配件，免收人工服务费。



黑色路面产品关键部件保修期为 2 年或 2000 小时（先到为准）

- ◆ 产品范围：摊铺机、双钢轮压路机、轮胎压路机、沥青搅拌站。



补偿一

- ◆ 产品质量问题引起停机故障 48 小时内未修复，优先提供备用机、无法提供备用机的按标准补偿；

补偿二

- ◆ 购买常用件 24 小时内未发货按标准补偿；

补偿三

- ◆ 压路机、平地机常用件高于市场价、按差价的 2 倍补偿。

以上条款的最终解释权归三一重工所有

售后服务热线
After-sale services hotline

4008 87 8318

咨询投诉电话
Consulting and complaint
telephone

4008 87 9318

Clients who purchased SANY Road Machinery Equipments will be free of labor service fee

- ◆ Road machinery products shall be free of labor maintenance fee in accordance with the requirements of the Operation and Maintenance Manual for maintenance time nodes and using SANY certified accessories.

The warranty period for key parts of black Road Machinery Product is 2 years or 2,000 hours (whichever ends first)

- ◆ Product scope: Paver, Double Steel Roller, Tyre Roller, Asphalt Batching Plant.

Compensation I

- ◆ If the machine failure caused by product quality problems has not been repaired within 48 hours, clients should be provided the standby machine priority, and the situation where the standby machine cannot be used should be compensated according to the compensation standard.

Compensation II

- ◆ Clients will be compensated for non-delivery of common parts within 24 hours after purchase according to the compensation standard;

Compensation III

- ◆ If the price of common parts of Road Roller and Grader is higher than market price, clients will be compensated by 2 times the price difference.

The final interpretation of the above terms is owned by SANY Heavy Industry